

Carrier 30 GX-102-A0145-PEE

Specifications

Brand	Carrier
Type	30 GX-102-A0145-PEE
Product type	Air Cooled Chiller
Capacity kW	332
Capacity Tons	94,40
Refrigerant	Freon
Refrigerant Type	R134a
Liquid buffer tank	✓
Weight in kg.	3.049 kg
Sizes	2950x2250x2500 mm (LxWxH)
Compressor(s) type & model	Carlyle 06NA2209S7NC and Carlyle 06NA2174S7NC
Display	Carrier pro-dialog plus
Number of fans	4
Fan specifications	948 RPM
Remarks	Y.o.b. 2002
Stock	1



Description

Used Carrier 30 GX-102-A0145-PEE

Used Carrier 30GX-102-A0145-PEE air cooled chiller. Complete with 2 Carlyle compressors, shell & tube evaporator/exchanger 73 liter. Condensor with copper tubes and aluminium fins with 4 Axial fans with a total airflow of 21.110 l/s and Pro-dialog plus control panel and 2 Liquid buffertanks.

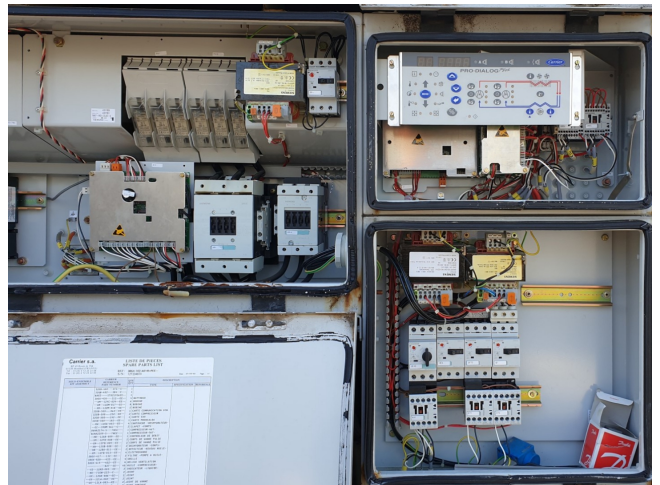
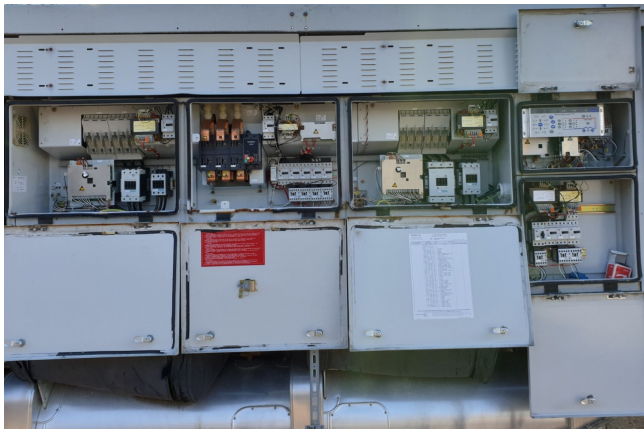
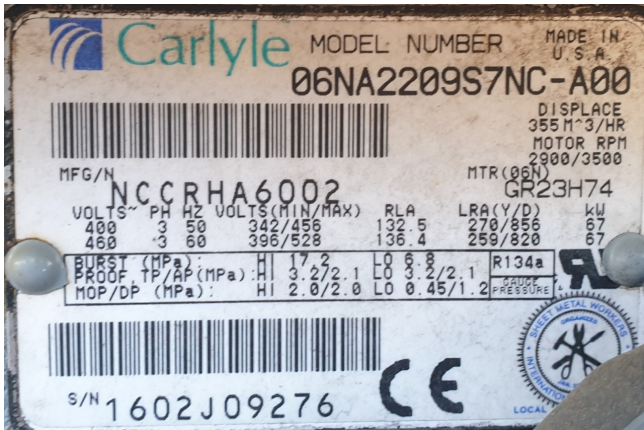
*All components of this used chiller will be tested on good working, leak free condition (condensing blocks), compressors, fans, control panel, etcetera). Choosing HOSBV means buying with warranty. We perform a industrial cleaning. Also, we can arrange your shipment.



1 - NUMERO DE SÉRIE SERIAL NUMBER	12T234870		
2 - MODÈLE - MODEL	30GX-102-A0145-PEE--		
3 - VARIANTE - VARIANT	30GX		
4 - ANNÉE DE FABRICATION ET DATE D'ESSAI YEAR OF MANUFACTURING AND TEST DATE	2002/06/10		
5 - FLUIDE - MEDIUM R	134A	CE 0062	
6 - GROUPE - GROUP	2		
7 - CHARGES CIRCUIT A	51,0 kg	8 - CHARGES CIRCUIT B	51,0 kg
9 - FLUIDE DE CONFINEMENT CONFINEMENT MEDIUM	23 - --AZOTE--NITROGENE--		
10 - PRESSION ADMISSIBLE MIN/MAX ALLOWABLE PRESSURE MIN/MAX (PS)	21 - HAUTE PRESSION HIGH PRESSURE		22 - BASSE PRESSION LOW PRESSURE
	0,9 25,0 bar		- 0,9 25,0 bar
11 - TEMPERATURES ADMISSIBLE MIN/MAX ALLOWABLE TEMPERATURE MIN/MAX (TS)	- 20 80 °C		- 20 80 °C
12 - PRESSION PRESSURE	25,0 bar		
13 - PRESSION DE DÉCL. SAFETY RELIEF VALVE SET	25,0 bar		
14 - PRESSION D'ESSAI D'ÉTANCHÉITÉ DE L'UNIT UNIT LEAK TEST PRESSURE			
15 - TENSION VOLTAGE	400	16 - PHASES	3
17 - FRÉQUENCE FREQUENCY	50 Hz	18 - COURANT CURRENT	268,0 0,0 A
19 - PUISSANCE ABSORBÉE MAX MAX POWER INPUT	159,0 0,0 kW		
20 - POIDS NET NET WEIGHT	3049 kg		

MANUFACTURING IN FRANCE BY
CARRIER S.A.
01120 - MONTLUEL - FRANCE
A SUBSIDIARY OF CARRIER CORPORATION
SYRACUSE NEW YORK
UNITED STATES OF AMERICA





Your partner for used commercial and
industrial refrigeration equipment

